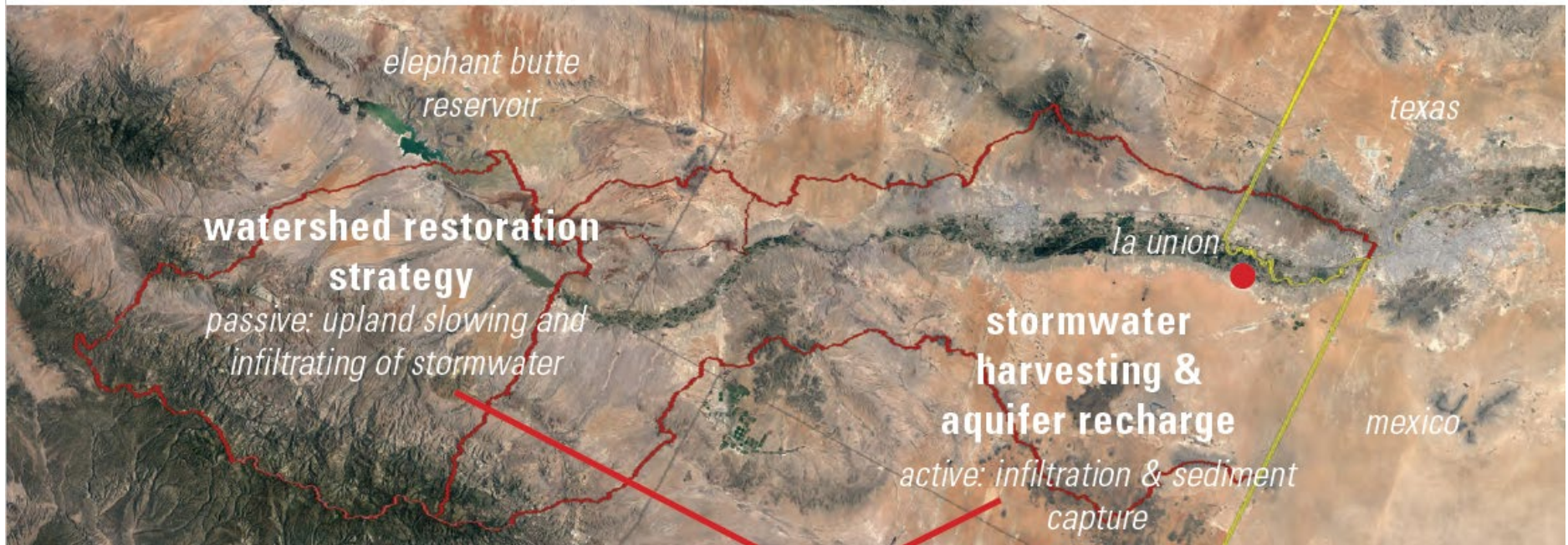


la union - conceptual watershed approach discussion



regional vision

connie maxwell

NM WRRRI grad. research asst.
NMSU Ph.D. cand., water sci. & man.



The South Central New Mexico Stormwater Management Coalition



watershed zones

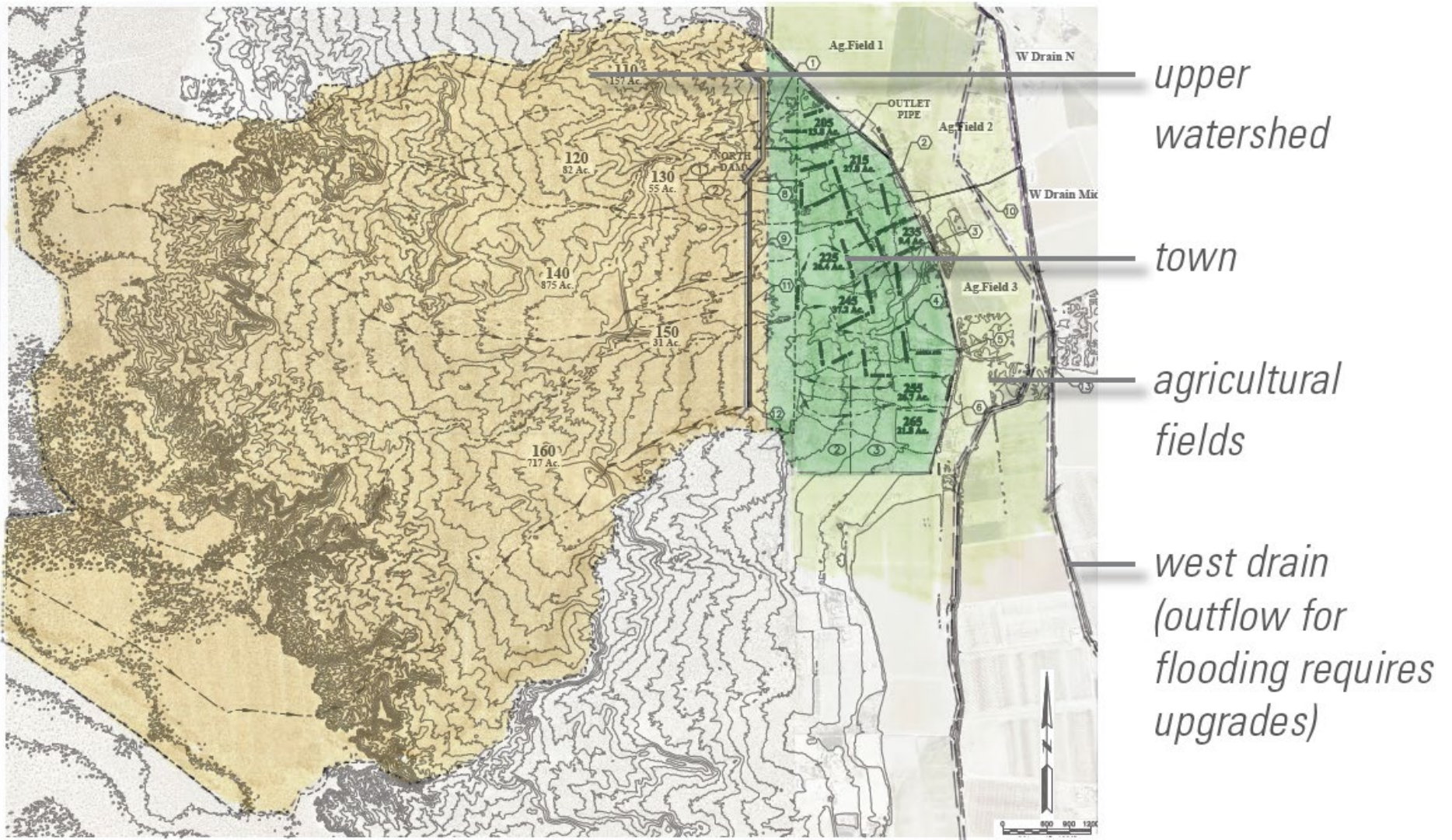
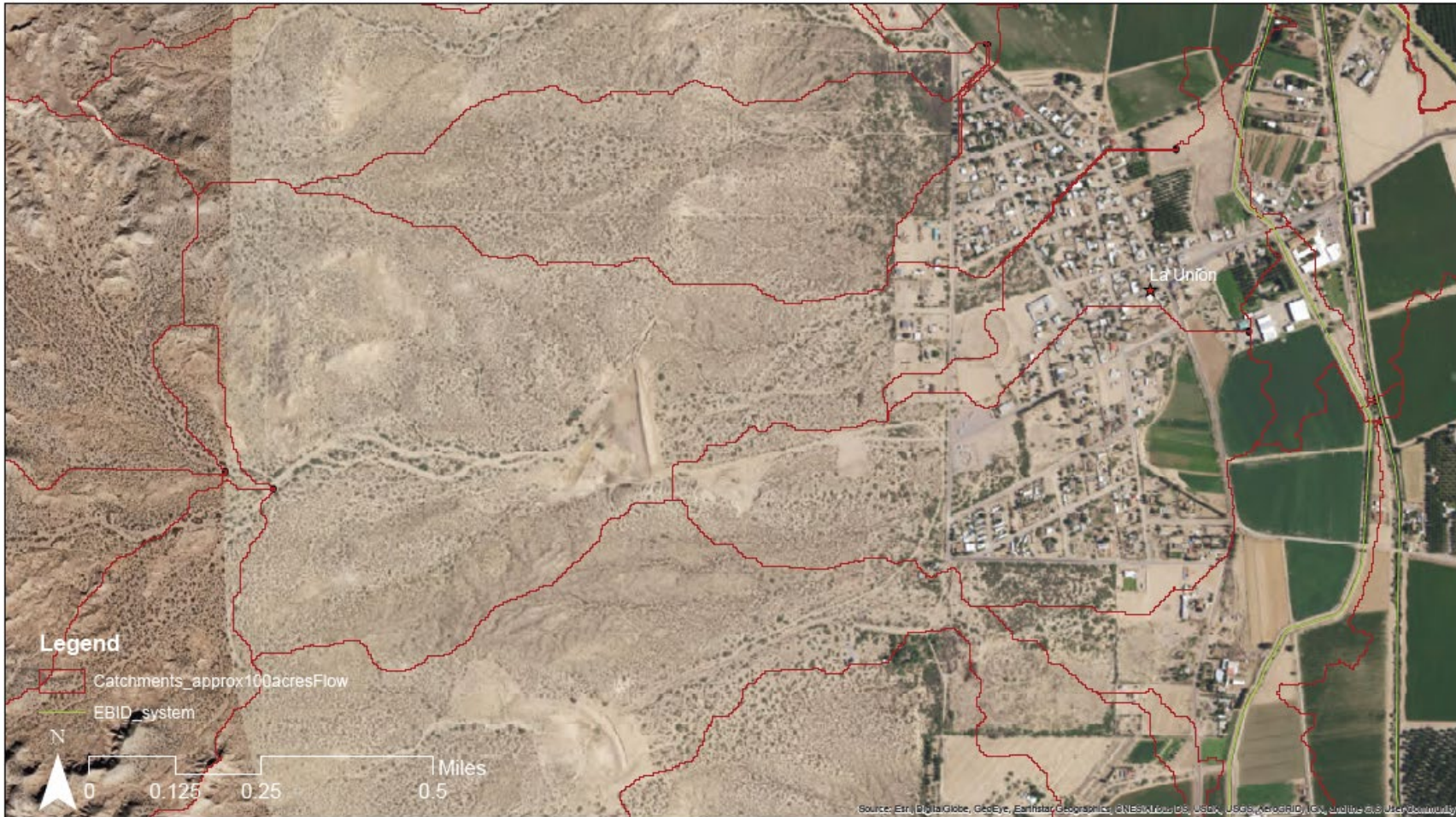


Figure 8 PROPOSED HYDROLOGY - OPTION 2

underlay

watershed close to town



La Union Area: catchments

contact: Connie Maxwell, alamosa@nmsu.edu, 575.740.1099



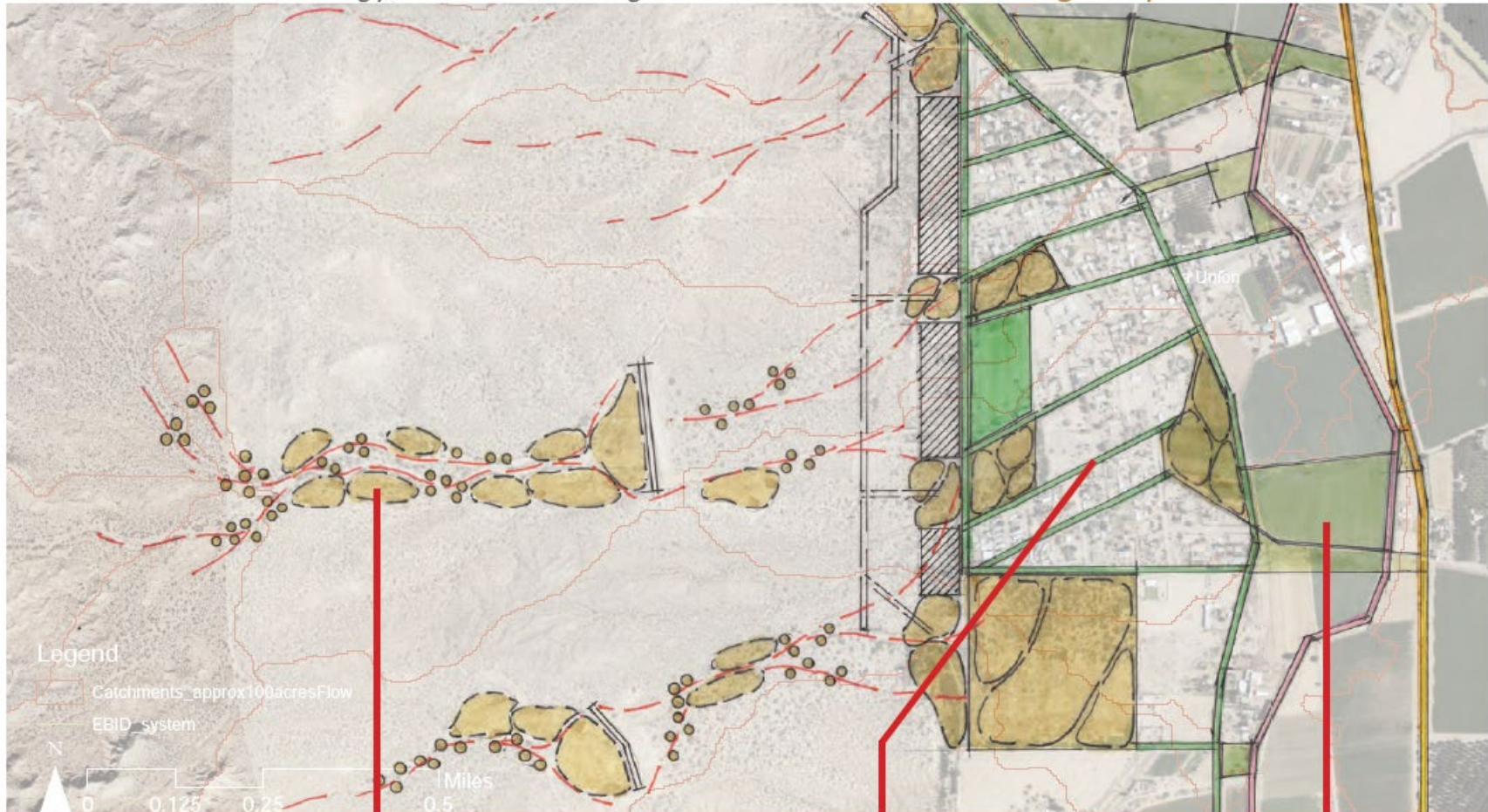
it all begins in the upper watershed

alamosa
LAND INSTITUTE

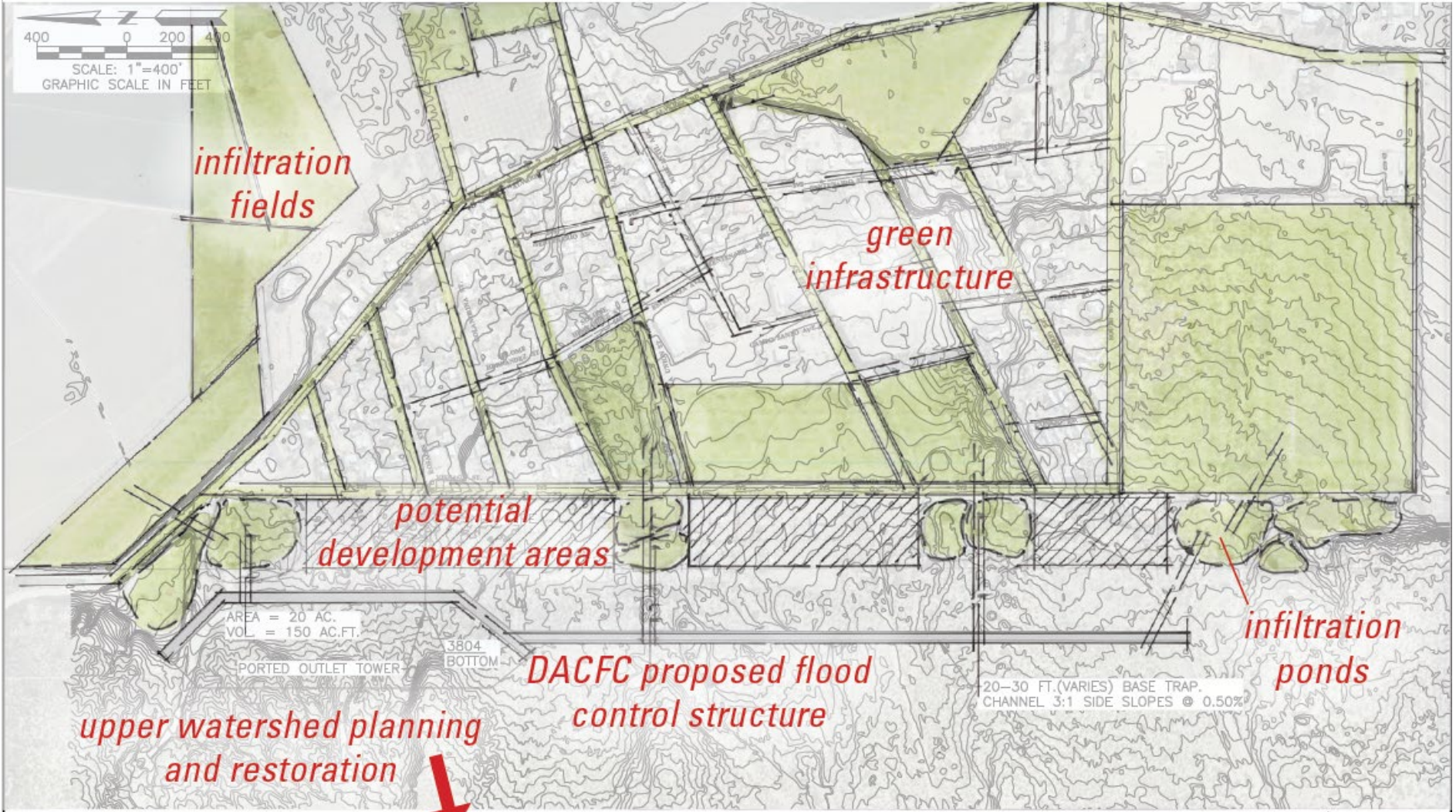
p.3 *la union - working draft*

reduce flood energy, infiltrate, revegetate

strategies per zone



collaborative planning effort to identify locations | town



REVISIONS		DATE	BY	CHKD	APP'D
BY	DATE	DESIGN	DATE	SCALE	DATE
BY	DATE	DESIGN	DATE	SCALE	DATE

DOÑA ANA COUNTY FLOOD COMMISSION
LA UNION MASTER DRAINAGE PLAN

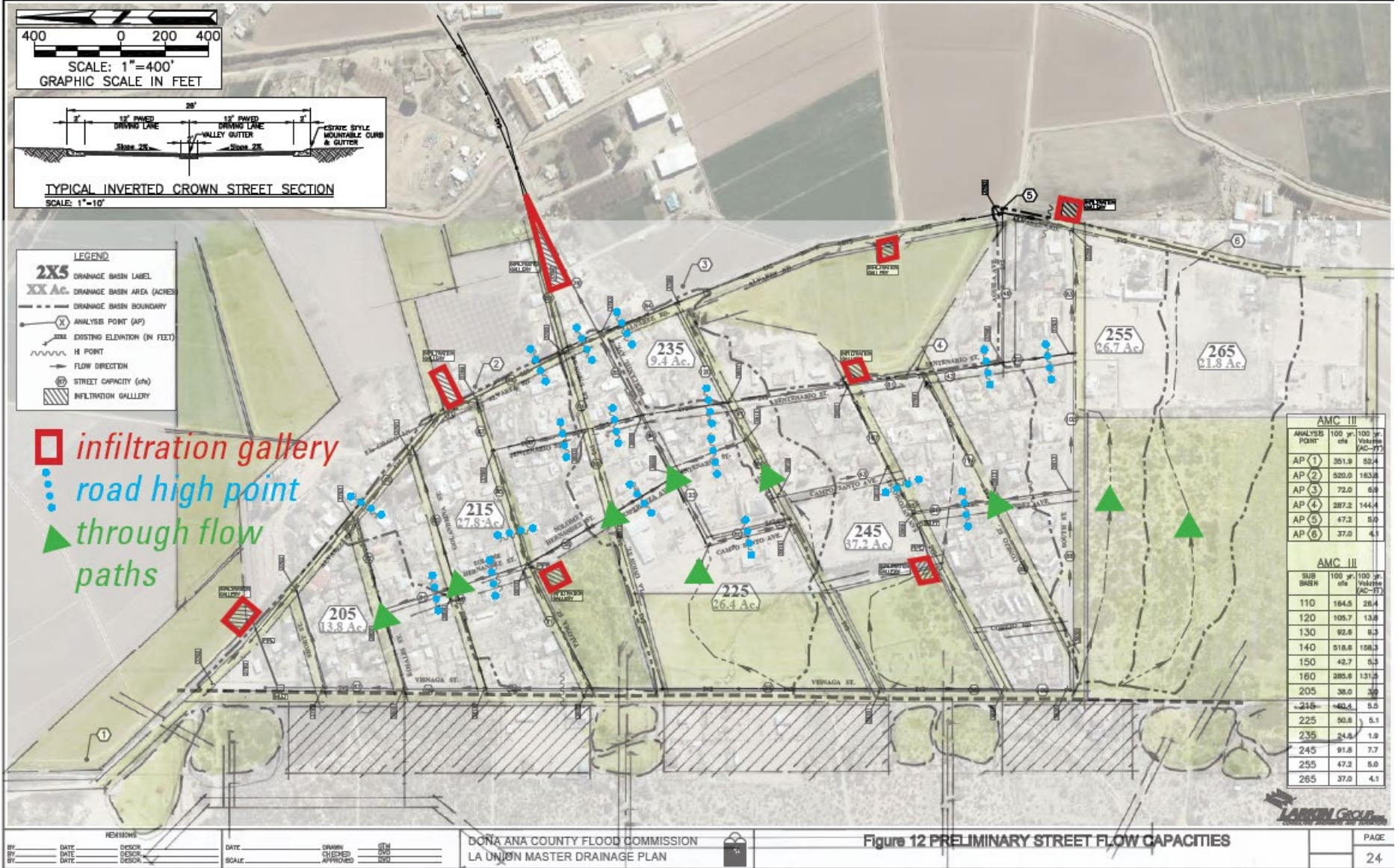
Figure 9 SINGLE DAM PRELIMINARY CHANNEL & DAM OPTION 2

PAGE
21

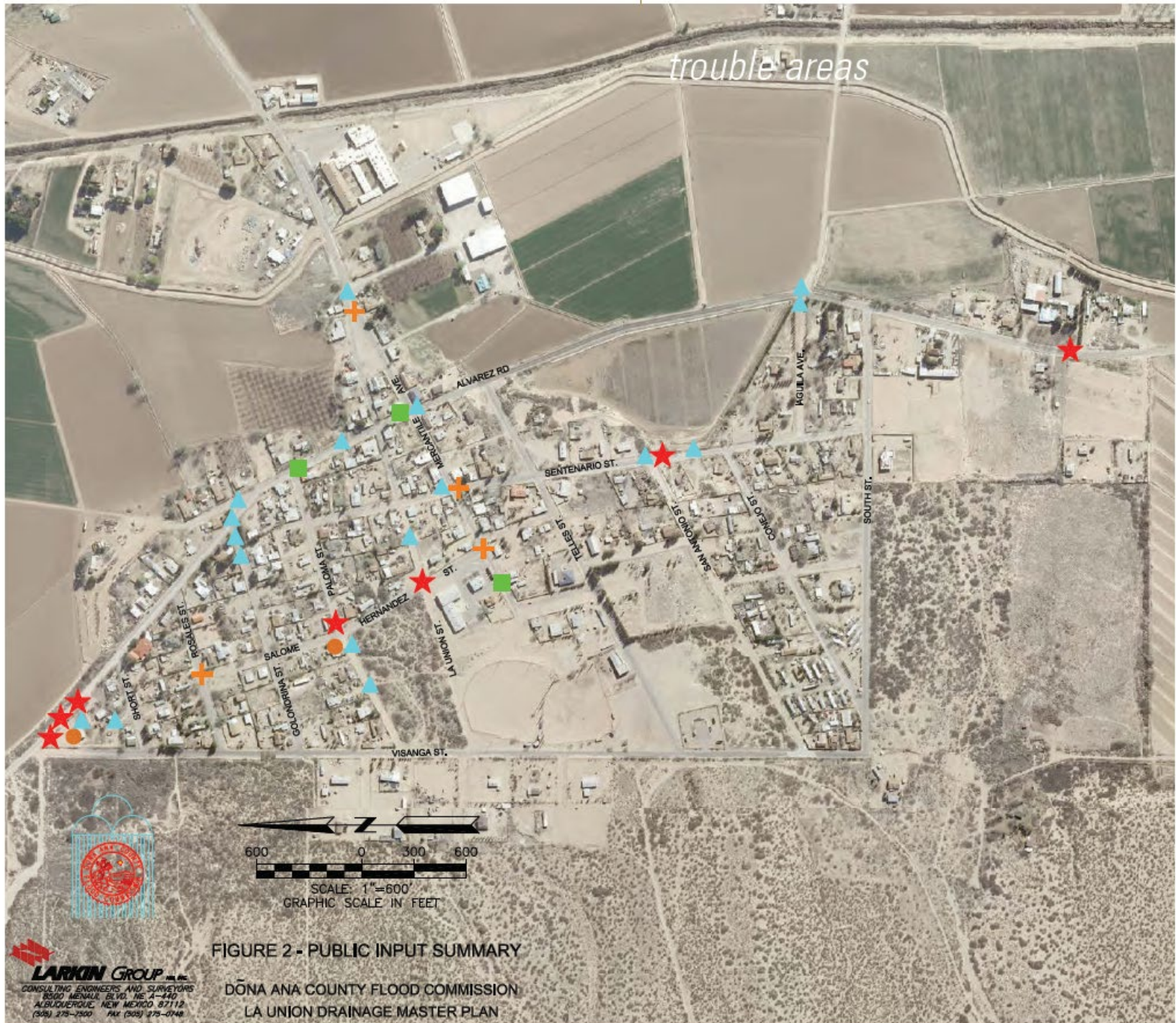
underlay



p.5 la union - working draft



underlay



upper watershed

reduce flood energy, infiltrate, revegetate



town green infrastructure

*infiltrate along flow paths - consider strategy for narrow roads -
some roads become one-way?*



fields

use agriculture as a system for handling stormwater and recharging the aquifer



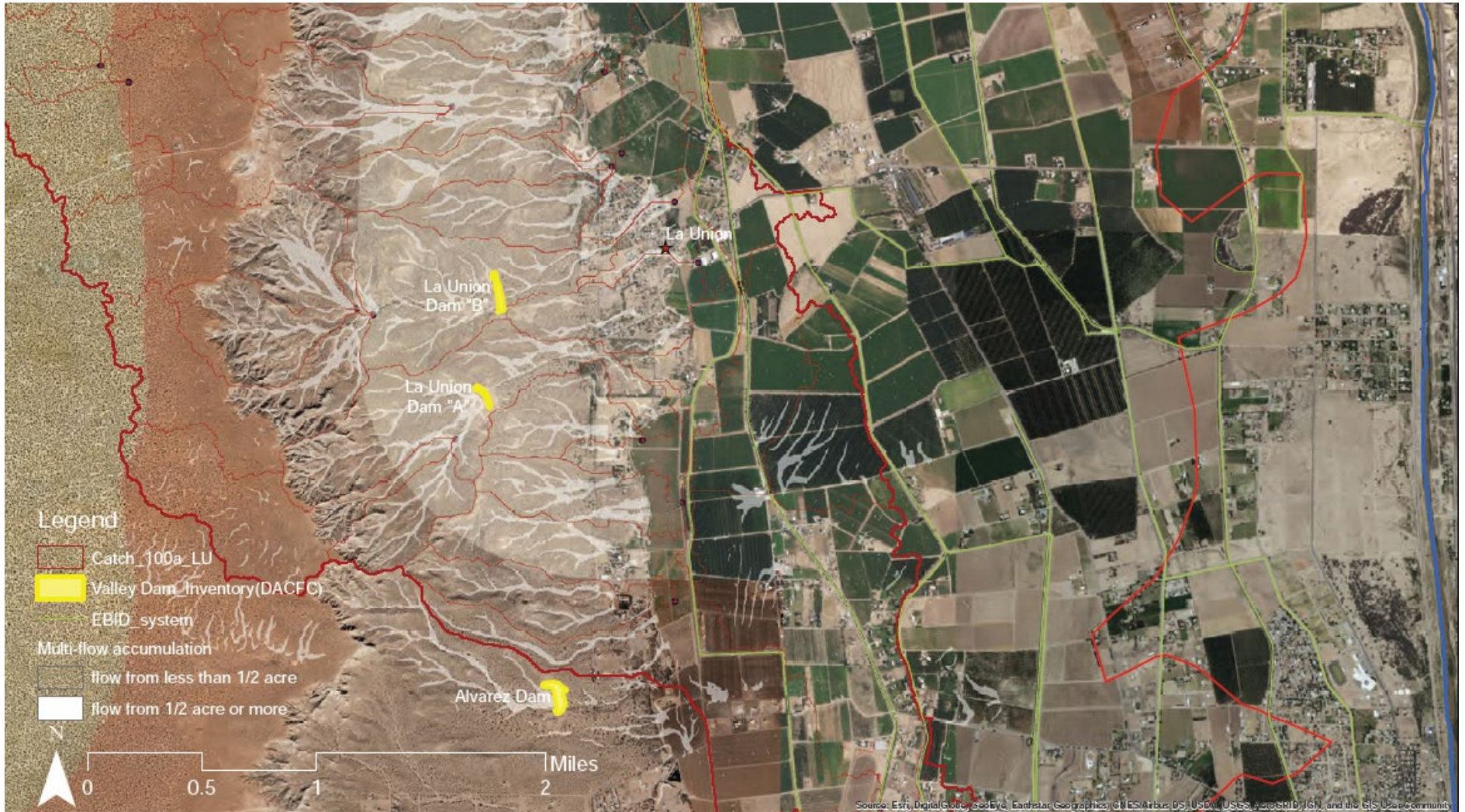
identify overflow fields for recharge, settling, and distribution to irrigation infrastructure

next steps

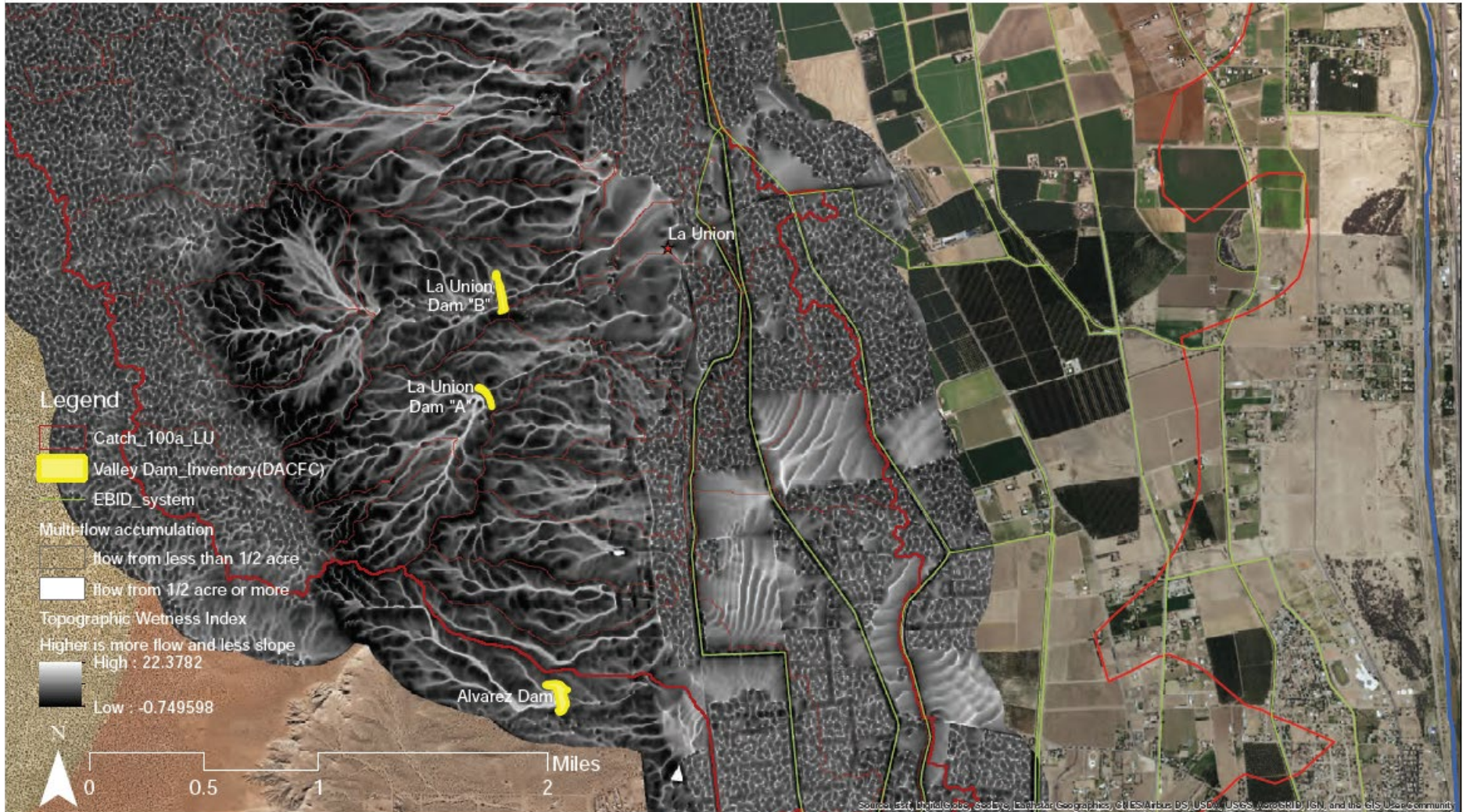


additional flow maps
reference

overall watershed flow patterns



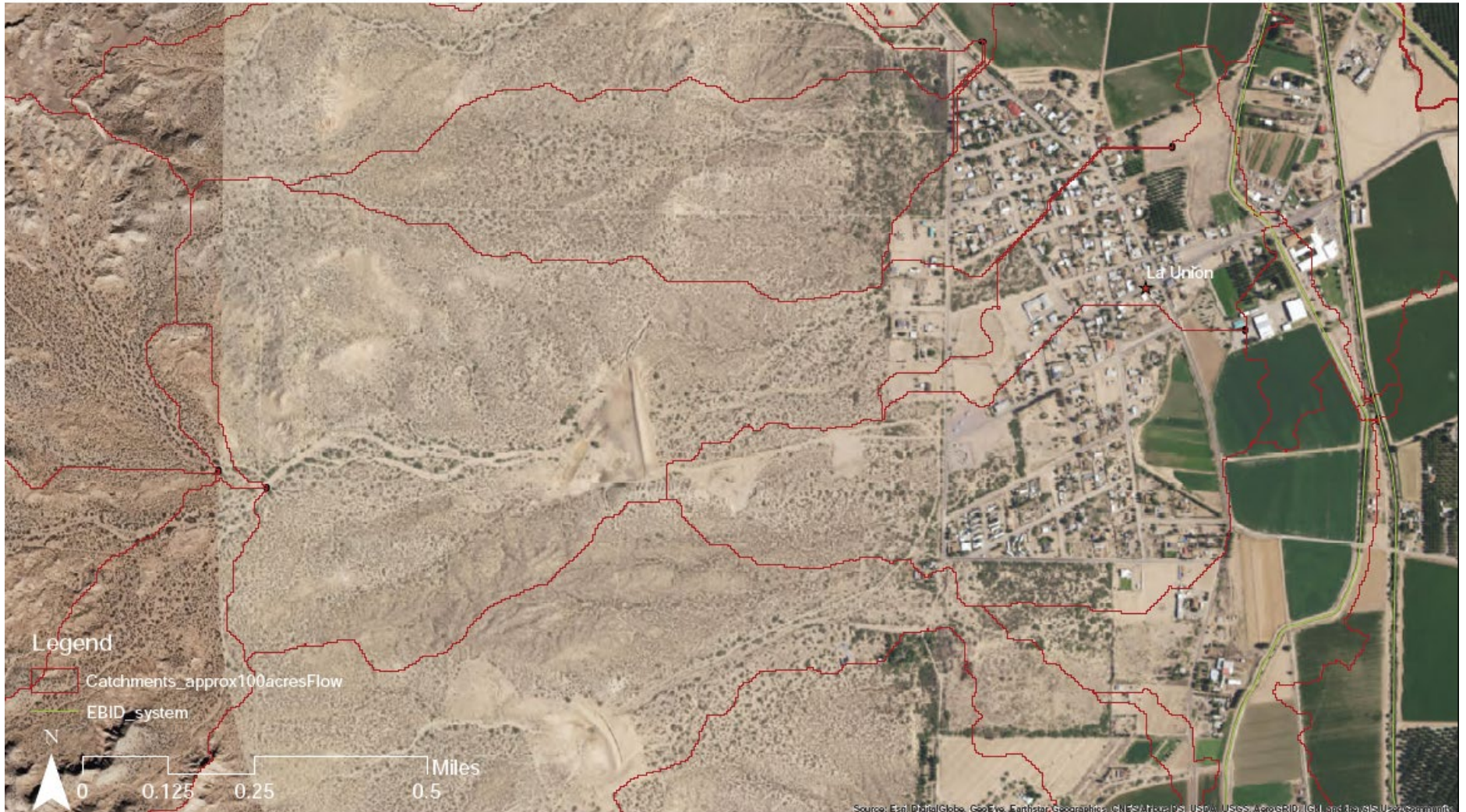
overall watershed flow patterns



overall watershed flow patterns



overall watershed flow patterns



overall watershed flow patterns

