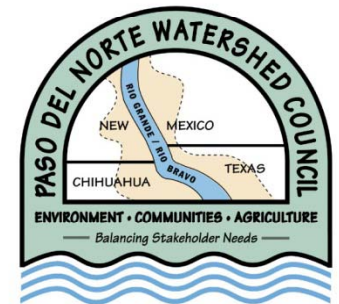


Paso del Norte Watershed Council Executive Committee Meeting 07/01/011:

PdNWC Website, Data, and Web Mapping Updates

Zach L. Edwards
GIS Coordinator
Spatial Applications Research Center
NMSU Geography



Overview of Updates/Improvements/Migration

- Where are we on the primary PdNWC website?
- Where are we on the Coordinated Database and GIS Data Download website?
- Where are we on data updates/improvements up for download?
- Where are we on the IMS to ArcGIS Server 10.x migration?
- Where are we on the ArcGIS Server Web Mapping Application (WMA) creation and development?
- What work is expected to be incorporated in the future?

PdNWC Website Updates

- Routine updates provided by council members
 - Meeting Minutes, Meeting Announcements, Informational PDFs, Upcoming Events, New Logo (and link), Library Page, What's Happening Page, etc.
- Improvements I've made both behind the scenes and those seen on the site (<http://www.pdnwc.org>):
 - Fixed all broken links
 - Added a counter
 - Cleaned up some poorly written html code

Coordinated Database and GIS Data Download Website

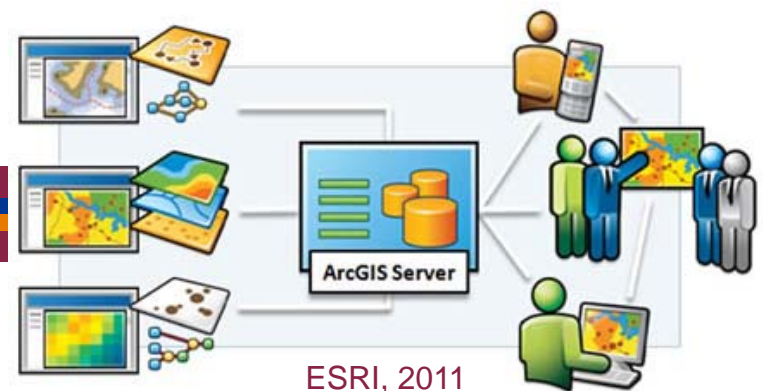
- Improvements I've made both behind the scenes and those seen on the site:
 - Migrated from old look to the primary PDNWC website look (template) including the new logo
 - New RG photo
 - Fixed broken links
 - Changed language in text from IMS to ArcGIS Server WMA
 - Updated links to point to the new WMA on the right and bottom of the website
 - Cleaned up some poorly written html code
 - Migrated researched reports into word documents

Data Updates/Improvements

- Updated DEM from 90m to 30m resolution for the PdNWC region
- Updated the Hillshade from 90m to 30m resolution for the PdNWC region
- Added the NHD Water Bodies & NHD Water Area datasets for the PdNWC region
- All new datasets have updated metadata and image samples

IMS to ArcGIS Server 10.x Migration

- The IMS to ArcGIS Server Web Mapping Application (WMA) migration has been completed
 - This required substantial behind the scenes processes including: (1) Copying a lot of data from the WRI server to the SpARC server, (2) Rebuilding and optimizing the map document containing the data, (3) Installing the new version (10.x) of ArcGIS Server and all its components, (4) Installing the new version (10.0) of Microsoft Visual Studio, (5) Creating an ArcGIS Server map service from the optimized map document, and (6) Create a WMA containing the newly created map service.
- The IMS is still functional on WRI's server for legacy purposes



Legacy IMS Site on WRRI's Server

The screenshot shows a web browser window titled "ArcIMS Viewer - Mozilla Firefox" with the URL http://river.nmsu.edu/website/pdnwc/pdnwc_site/viewer.htm. The browser's address bar and tabs are visible at the top. The main content area displays a map of the Paso del Norte Watershed Council region, showing the Rio Grande and surrounding areas. The map includes labels for "Elephant Butte" and "Abuelito Reservoir". A scale bar at the bottom of the map indicates a distance of 91 miles. A legend on the right side of the map, titled "LAYERS", lists various data layers such as "Water Resources", "USGS Groundwater", "USGS Surface water", "US Dams", "IBWVC", "Historical Sites", "EPWU Wells", "Elephant Butte Irrigation Dis", "El Paso County Water Impro", "IMAS", "CNA Valley", "USBR", "Valle Hydro", "NHD Flowline", "NHD Waterbody", "River", "Water Bodies", "US HUCS", "US Aquifers", "Transportation", "Administrative Boundaries", "Miscellaneous", and "Land and Biological Resources". A "Refresh Map" button and an "Auto Refresh" checkbox are located below the legend. A "Help" section at the bottom of the legend provides instructions for interacting with the layers. At the bottom of the browser window, a status bar displays the text "USGS Surface water is now the Active Layer".

Paso del Norte Watershed Council
Rio Grande Data Portal
Texas - New Mexico Region

Help

Refresh Map
 Auto Refresh

Help:
A closed group, click to open.
An open group, click to close.
A map layer.
A hidden group/layer, click to make visible.
A visible group/layer, click to hide.
A visible layer, but not at this scale.
A partially visible group, click to make visible.
An inactive layer, click to make active.
The active layer.
Click to Expand/Collapse.

0 91 Miles

USGS Surface water is now the Active Layer

Current tool:
Zoom In
Done

ArcGIS Server Web Mapping Application (WMA) Development

Paso Del Norte Watershed Council Rio Grande Data Portal - Texas-New Mexico Region

Search Attributes | Print 1:852,389

Results

Map Contents

- PDNWC
 - USGS Groundwater Wells
 - USGS Surface Water Gage
 - US Dams
 - IBWC
 - Historical Sites
 - EPWU Wells
 - Elephant Butte Irrigation D
 - Spillway
 - River Station
 - Pump
 - Monitoring Well
 - Heading
 - Farm Turnout
 - Drain
- El Paso County Water Imp
- JMAS
- CNA Valley
- USBR
- Valle Hydro
- NHD Flowline
- NHD Waterbody
- River
- Water Bodies
- US HUCS
- US Aquifers
- US-MX Rail
- US-MX Roads
- International Border
- Counties
- MX Municipios
- Places
- Study Region

Haynor Bridge Station (Elephant Butte Irrigation District)

OBJECTID	80
X	1403189.15013
Y	587736.40604
SITE_ID	101
NEWSITENAME	Haynor Bridge Station
TYPE	River Station
DISPLAYONW	Y
STRCANALNA	RIVER (SIERRA)
URL	http://www.ebid-nm.org/More_Info.asp?Site=Hay

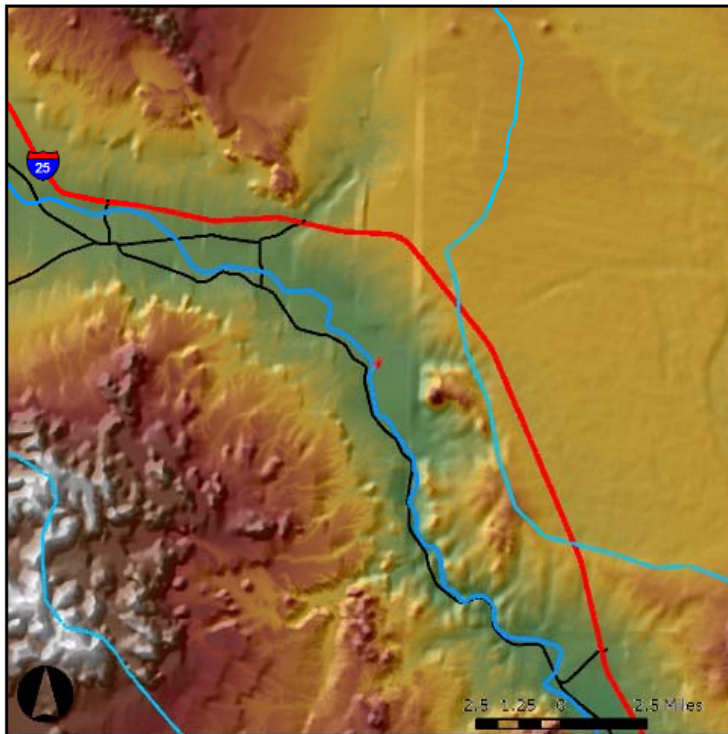
PDNWC > Elephant Butte Irrigation District
[Add to Results](#)

ArcGIS Server Web Mapping Application (WMA) Development –

Print Function

EBID Haynor Station

EBID Haynor Station



- Elephant Butte Irrigation District
- River
- Water Bodies
- US HUCS
- US-MX Roads
- MX Federal Highway
- US Interstate
- International Border
- Counties
- Study Region

haynor (1)

Elephant Butte Irrigation District (1)

OBJECTID	Shape	X	Y	SITEID	NEWSITENAM	TYPE	DISPLAYONW	STRCANALNA	URL
80	Point	1403189.15013	587736.40604	101	Haynor Bridge Station	River Station	Y	RIVER (SIERRA)	http://www.ebid-nm.org/wris2008/More_Info.asp?Site=Haynor_Bridge



ArcGIS Server Web Mapping Application (WMA) Development – USGS Custom Query

Paso Del Norte Watershed Council Rio Grande Data Portal – Texas-New Mexico Region

General Search | USGS Surface Water Query | Print 1:1,770,872

Results
Clear All
USGS Surface Water Query (1)
USGS Surface Water Gages (1)
Rio Grande at Island S

USGS Surface Water Query
USGS Surface Water Gages

- Rio Grande at Island St nr El Paso, TX
- ALEMAN DRAW AT ALEMAN, NM
- Camp Rice Arroyo Trib nr Ft Hancock
- Franklin Canal at El Paso, TX
- Government Ditch at El Paso, TX
- Hudspeth Feeder Canal nr Tornillo, TX
- LAS CRUCES ARR NR LAS CRUCES, N
- LUMBER CANYON TRIB NEAR MONTICELLO, NM
- McKelligon Canyon at El Paso, TX
- Northgate Res at El Paso, TX
- PERCHA CREEK NEAR HILLSBORO, NM
- PERCHA CREEK TRIB NEAR KINGSTON, NM
- PERCHA CRK AT CABALLO DAM NEAR ARREY, NM
- Range Res at El Paso, TX
- Rio Grande at County Line Station nr El Paso, T
- RIO GRANDE AT EL PASO, TX
- RIO GRANDE AT FORT QUITMAN, TX
- Rio Grande at Island St nr El Paso, TX
- RIO GRANDE AT NARROWS IN ELEPHANT BUTTE RES., NM
- Rio Grande at Tornillo Branch nr Fabens, TX

Rio Grande at Island St nr El Paso, TX

OBJECTID	8366500
NAME	Rio Grande at Island S
COUNTY	El Paso, TX
STATE	TX
URI	http://waterdata.usg.gov/nwis/inventory

Map Content:
PDNWC
USGS Groundwater Wells
USGS Surface Water Gages
Dams
WC
historical Sites
WU Wells
Elephant Butte Irrigation D
Paso County Water Imp
NHD Waterbody
River
Water Bodies
US HUCS
US Aquifers
US-MX Rail
US-MX Roads
International Border
Counties
MX Municipios

Scale: 0 5 10 20 30 40 Miles

ArcGIS Server Web Mapping Application (WMA) Development – Point Buffer

WMA DEMO

The image displays a web mapping application interface for the Paso Del Norte Watershed Council Rio Grande Data Portal. The interface is divided into several sections:

- Header:** "Paso Del Norte Watershed Council Rio Grande Data Portal - Texas-New Mexico Region". Navigation links include "General Search", "USGS Surface Water Query", "Print", and "Point Buffer Tool". A scale indicator shows "1:97,928".
- Point Buffer Tool (Left Panel):** A configuration window with the following settings:
 - Distance [value or field]: 3 Miles
 - Side Type: FULL
 - End Type: ROUND
 - Input Point: (Empty text box)Buttons for "Help" and "Submit" are visible.
- Map Contents (Left Panel):** A list of layers with checkboxes. The "USBR" layer is checked and highlighted with a red triangle. Other layers include "Valle Hydro", "NHD Flowline", "NHD Waterbody", "River", "Water Bodies", "US HUCS", "US Aquifers", "US-MX Rail", "US-MX Roads", "International Border", and "Counties".
- Results (Middle Panel):** A "Clear All" button and a list of results:
 - Point Buffer Tool Results
 - buffer1.shp (1)
 - Inputs
- Print (Bottom Right Panel):** A "Print" dialog box with the following options:
 - Title: Map
 - Map Size: Medium
 - Print table of results for:
 - Point Buffer Tool Results
 - Print results only (no map)
 - Buttons: "Create Print Page"
- Map (Right Panel):** A topographic map showing a river (Rio Grande) and a red circular buffer overlay centered on a point on the river. A red line representing a road (Interstate 25) is also visible.

Next Steps/Future Work

- EBID to be acquired from Phil
- Gaging data to be acquired from Ping
- US Riparian/Vegetation vector data to be incorporated
- USGS gage data → waiting on confirmation from USGS on any updates/changes
- Repackage all data into one file geodatabase for download

Final Comments

- **No Cost Extension until 09/30/2011**
- What about the NLCD developed impervious surface?
- What about land ownership?
- Any other data needs?
- Any ideas/comments on WMA?

Vegetation NM & TX Generated from Landsat MSS and Ground Survey



PERIMETER	OBJECTID	VEGCOVER	CODE	ACRES
82562.1199914	663	Crops	44	30817
54577.3671394	658	Mesquite-Sandsage Shrub	14	29191
50528.9972491	656	Tobosa-Black Grama Grassland	1	23505
334971.647335	652	Mesquite-Sandsage Shrub	14	464030
1065865.54906	649	Tobosa-Black Grama Grassland	1	2091214
73106.7643142	650	Crops	44	46493
143065.789712	651	Creosotebush-Lechugilla Shrub	7	167872
86645.5557764	693	Urban	46	54503
21296.6637102	695	Crops	44	4736
215355.001503	745	Crops	44	93459
535133.896332	782	Creosotebush-Lechugilla Shrub	7	233970
73913.2383023	793	Gray Oak-Pinyon Pine-Alligator Juniper Parks/Woods	29	23861
59792.9856884	805	Creosotebush-Lechugilla Shrub	7	19274
34717.4823363	814	Tobosa-Black Grama Grassland	1	12648
81409.4840485	827	Mesquite-Sandsage Shrub	14	30428
27699.9098191	837	Creosotebush-Mesquite Shrub	8	5718
104030.603778	842	Tobosa-Black Grama Grassland	1	27591
60441.0667006	850	Creosotebush-Mesquite Shrub	8	13960
65797.4362174	851	Creosotebush-Mesquite Shrub	8	19073
46322.7852507	867	Tobosa-Black Grama Grassland	1	15334
30597.6658396	876	Tobosa-Black Grama Grassland	1	7450
22426.3213417	872	Creosotebush-Mesquite Shrub	8	5797
43951.5962036	905	Creosotebush-Mesquite Shrub	8	9150
29287.7786467	919	Creosotebush-Mesquite Shrub	8	7658
135694.870806	925	Creosotebush-Lechugilla Shrub	7	79849
47702.1810411	933	Gray Oak-Pinyon Pine-Alligator Juniper Parks/Woods	29	15190
25718.2636978	939	Creosotebush-Mesquite Shrub	8	4936
77157.8626148	942	Creosotebush-Lechugilla Shrub	7	24886
107459.599712	950	Creosotebush-Lechugilla Shrub	7	11747
34958.7702502	987	Tobosa-Black Grama Grassland	1	5014
309960.381538	0	CHIHUAHUAN DESERT SCRUB	12	552922
11471.9356767	0	PLAINS-MESA SAND SCRUB	14	1189
95819.773151	0	CONIFEROUS AND MIXED WOODLAND	7	39969
317480.055382	0	CONIFEROUS AND MIXED WOODLAND	7	160874
260558.287427	0	CHIHUAHUAN DESERT SCRUB	12	284613
270613.648342	0	CLOSED BASIN SCRUB	16	207443
228644.097251	0	MONTANE CONIFEROUS FOREST	6	170845
91821.7103315	0	DESERT GRASSLAND (ECOTONE)	11	52386
49205.4877398	0	LAVA BEDS	2	11749
724238.741	0	DESERT GRASSLAND (ECOTONE)	11	1295108
305836.074975	0	DESERT GRASSLAND (ECOTONE)	11	206252
16473.7953944	0	CONIFEROUS AND MIXED WOODLAND	7	1952
73121.7031132	0	CHIHUAHUAN DESERT SCRUB	12	33266
204346.171716	0	DESERT GRASSLAND (ECOTONE)	11	77642
68864.2214862	0	CLOSED BASIN SCRUB	16	50900
19906.10529	0	URBAN, FARMLAND OR OPEN WATER	1	2992

[BACK](#)